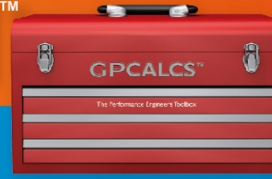


GPSTEAM™

Properties Calculator



READ ME FIRST!

Congratulations on your purchase of **GPSTEAM™ Version 7!**

You have acquired what we believe to be the best value in thermal performance software available today.

SYSTEM REQUIREMENTS

GPSTEAM requires certain hardware and software components to be able to run properly:

- 1 GHz or faster 32-bit (x86) or 64-bit (x64) processor
- **Microsoft Windows Server Operating System.** You must use a version of the Microsoft Windows operating system that is actively supported by Microsoft and is compatible with the .NET 4.8 Framework (<http://msdn.microsoft.com/en-us/library/8z6watww.as>™).
- **Microsoft Office** Use of a version Office that is actively supported by Microsoft is strongly recommended
- 1 gigabyte (GB) RAM (32-bit) or 2 GB RAM (64-bit)
- A hard drive with at least 100MB of available space

INSTALLATION

At the time of purchase, you will be sent a link to the download site for GPSTEAM, along with a Product Key used to activate the software after installation.

Note

If GPSTEAM v7 installation detects that GPSTEAM v6 or earlier is installed on your computer, you will be prompted to uninstall it.

If GPSTEAM v7 is installed on your computer, you must uninstall it prior to installing GPSTEAM v7. You will NOT be prompted to do so.

1. Exit any other applications that are running.
2. Browse to the folder with the GPSTEAM installation files and run the GPSTEAM_Setup.exe program.
3. Read the License Agreement. Check the I agree to accept the license terms and conditions box.
4. The default directory for the program is C:\Program Files\EtaPRO LLC\GPSTEAM 7.x. To select a new destination folder for the program, click Options to display the Setup Options dialog. Use the Browse button to locate the folder and then click **OK**.
5. Click Install to display the User Account Control dialog and click **Yes** to continue.
6. The files will be installed and when complete, the Setup Complete dialog displays. Click Close.
7. To complete the installation, you need to license the software using the License Manager app and enable the GPSTEAM Excel Add-in using the app in the GPSTEAM folder.

LICENSING

In previous versions of GPSTEAM, licensing was done through a Lock Code and Key Value methodology. For GPSTEAM 7, this licensing methodology was changed to require the use of a **Product Key**. A **Product Key** is a set of 30 alpha-numeric characters similar to product keys used with other software products. Licensing enables the GPSTEAM Properties Calculator and the GPSTEAM Excel Add-in, and registers the software to your computer.

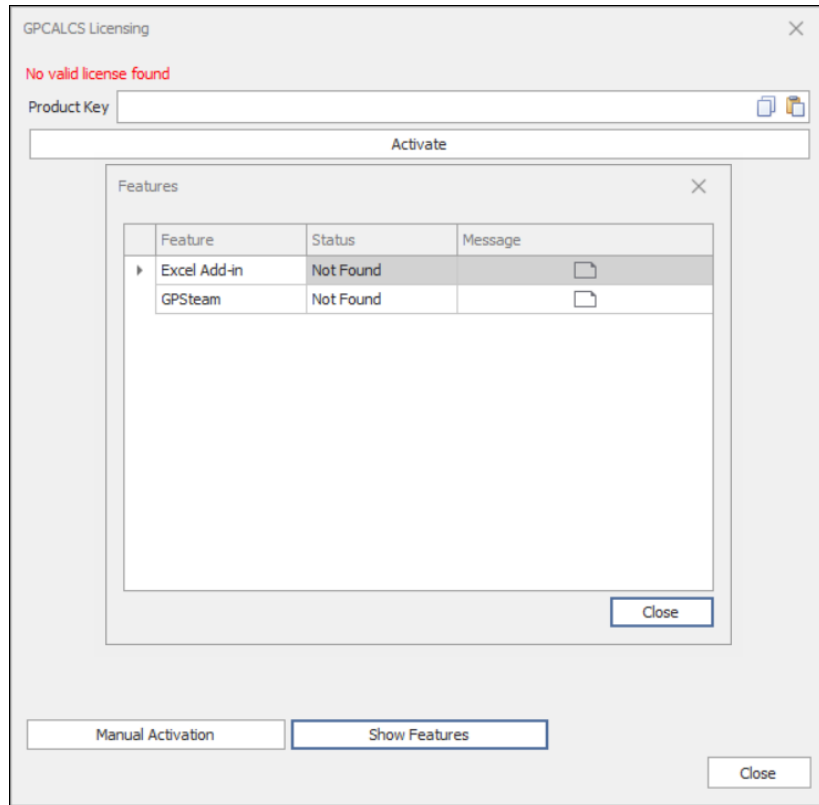
Note

Product Key. Each Product Key will allow three activations so that GPSTEAM can be installed on up to three computers.

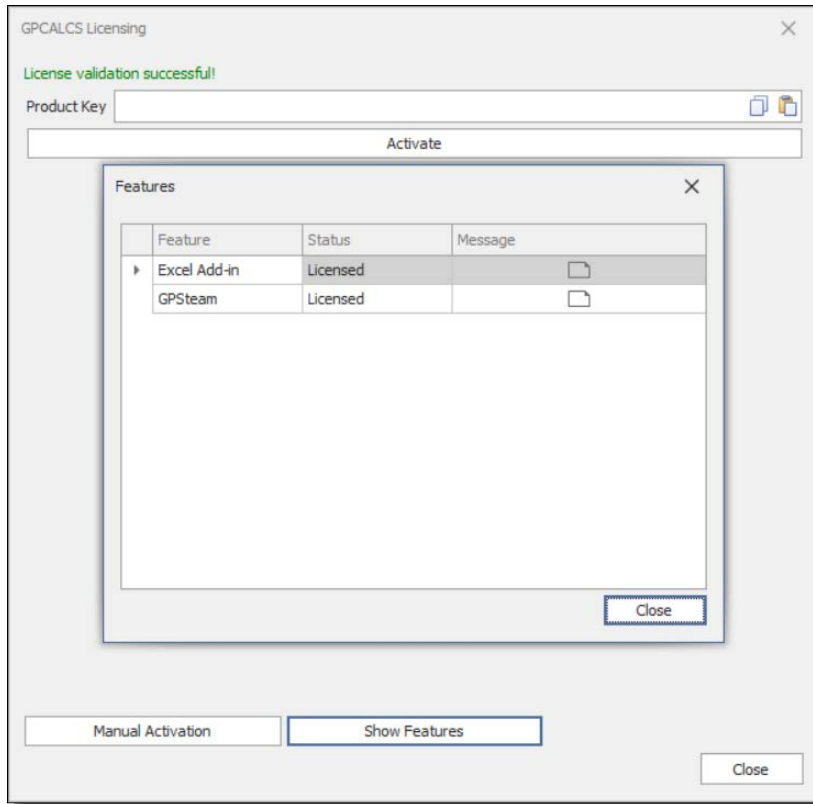
30-Day Trial Period. GP Strategies allows a 30-day trial period of the GPSTEAM software for new users. After the 30-day trial period expires, **GPSteam** and the **GPSTEAM Excel Add-in** will be disabled.

Follow these instructions to enter the **Product Key**:

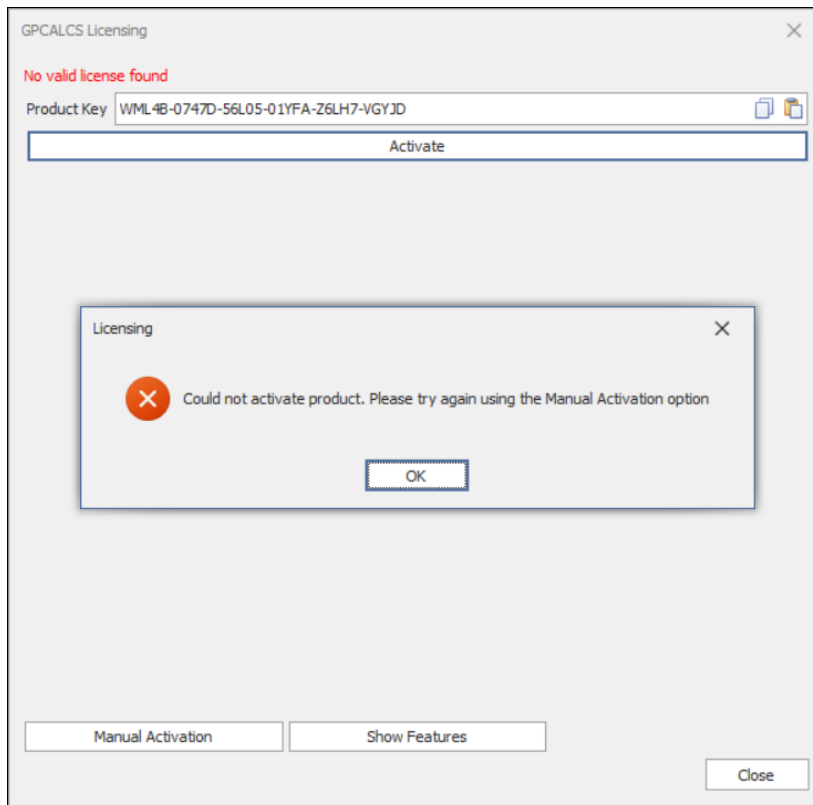
1. You should be given the **Product Key** when purchasing GPSteam or GPSTEAM. If you have been using the 30-day trial version and now want the licensed version, contact EtaPRO LLC by email at EtaPRO-Support@etapro.com.
2. Click the License Manager app in the **Start|GPSTEAM 7** menu to display the **GPCALCS Licensing** dialog.



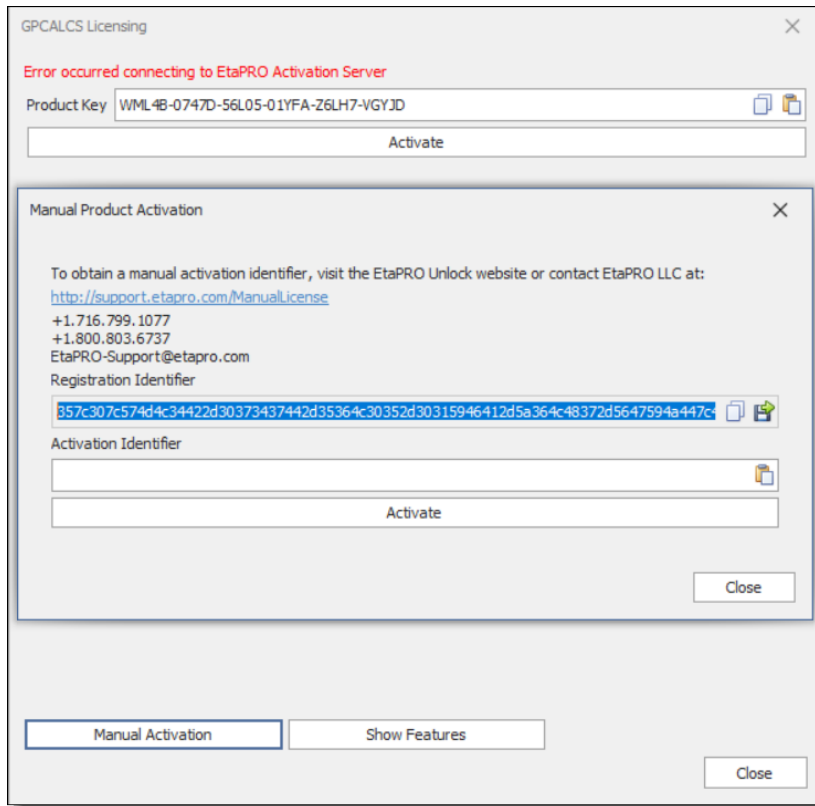
3. Enter the Product Key and then click Activate. If the activation is successful, a message will display on the License Manager dialog indicating that the license validation was successful and further action is not required. Click **Close** to complete the licensing process.



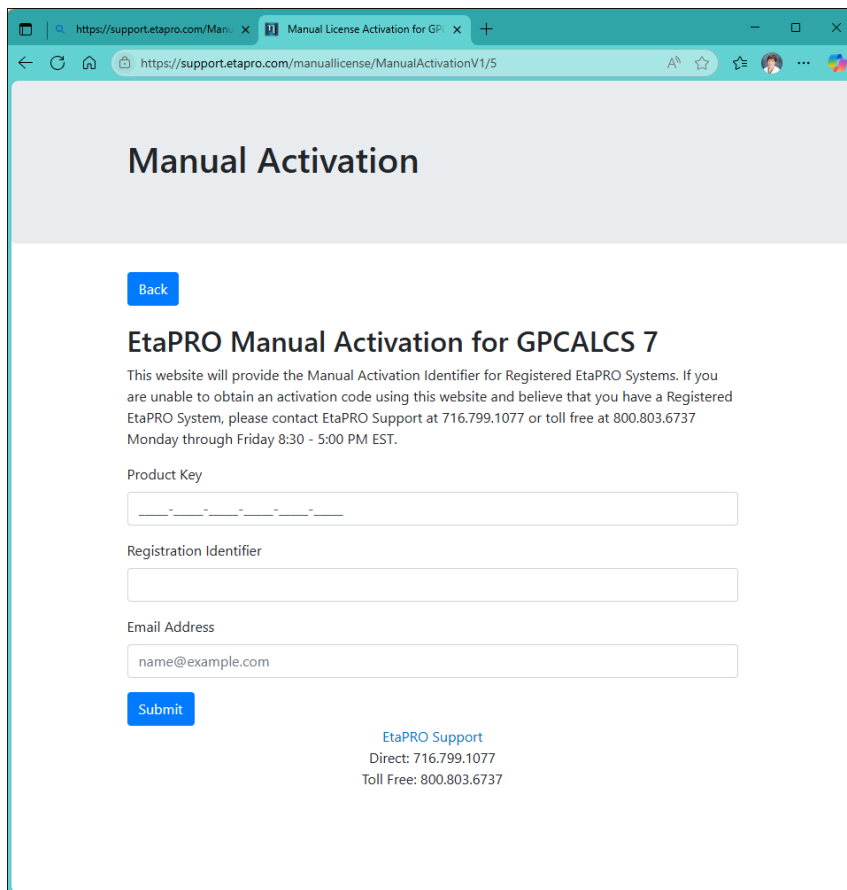
4. If you do not have internet access, you will see this error message.



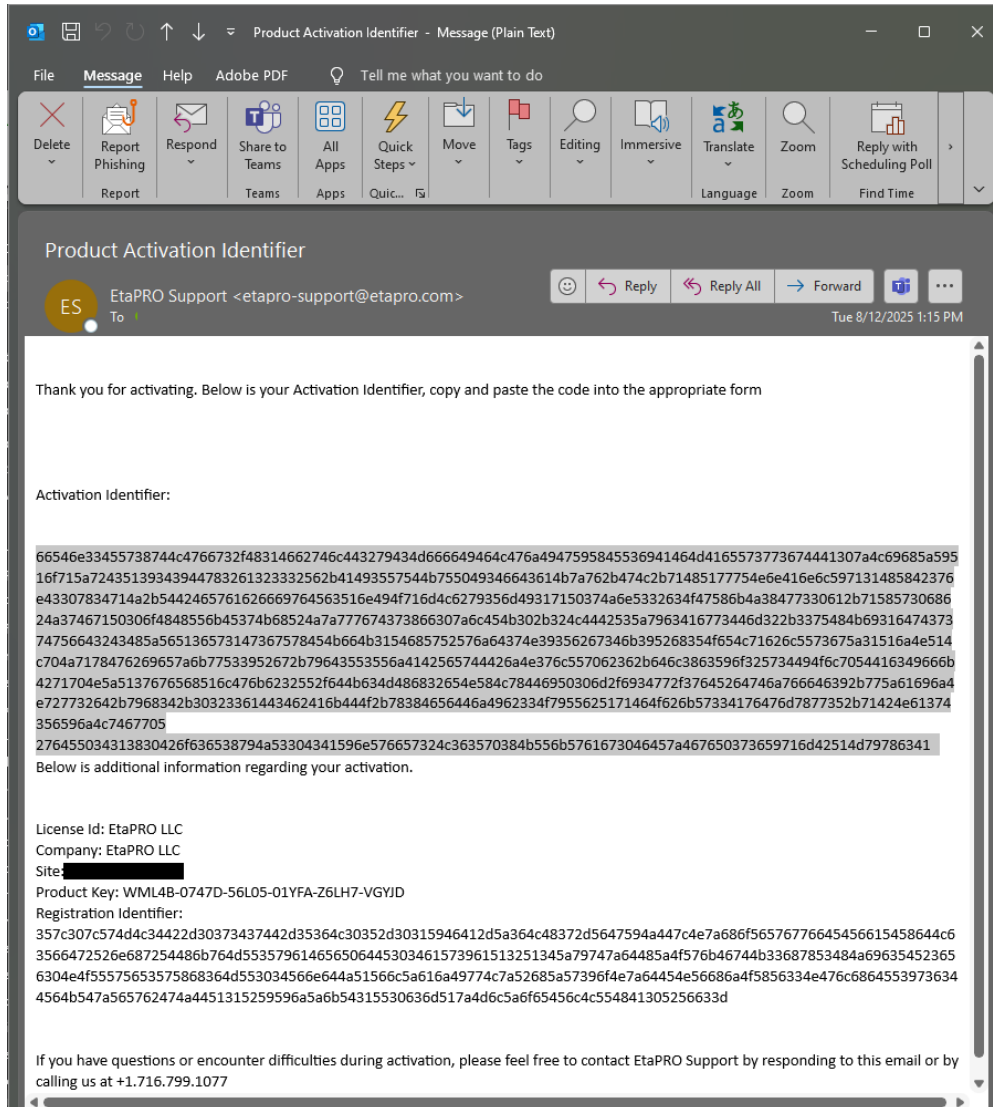
5. Click OK and then click **Manual Activation** to display on the *Manual Product Activation* dialog.



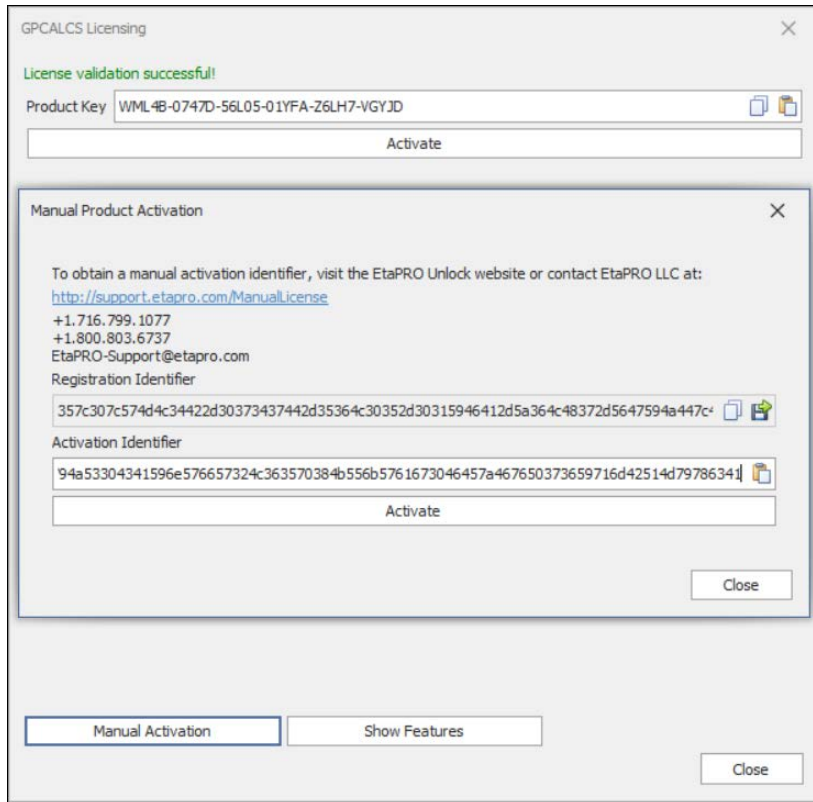
6. Click the **Copy** icon to copy the Manual Registration Identifier to the clipboard or click **File** icon to save it to a file.
7. Open this website on a computer with internet access: <http://support.etapro.com/ManualLicense> to display **Manual Activation** website. Select the **GPSTEAM V7** link and enter your Product Key and the Manual Registration Identifier in the fields provided along with your email address.



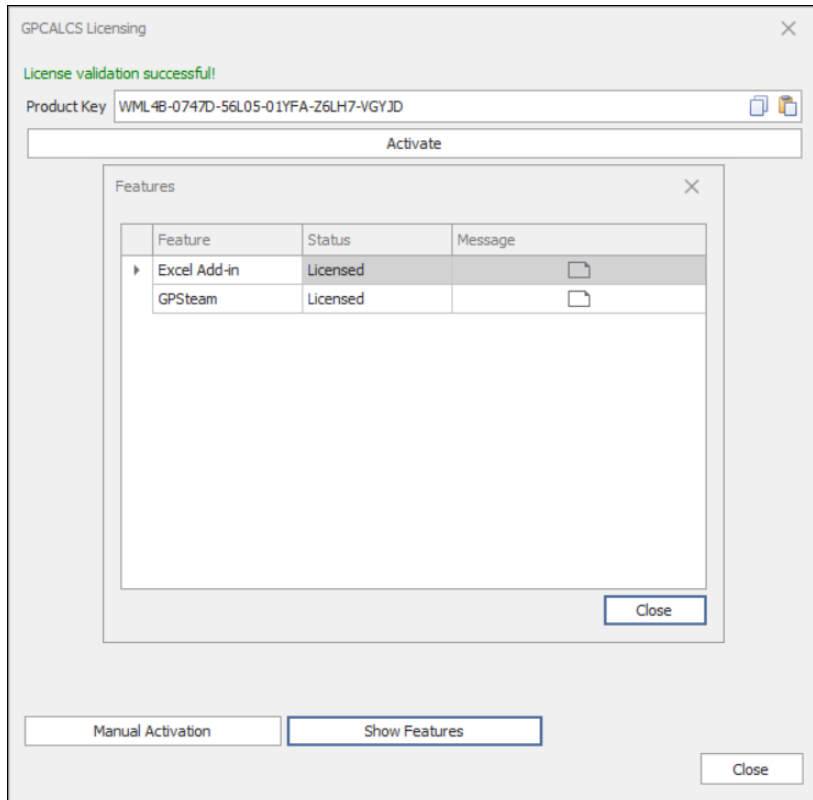
8. Click Submit.
9. An Email containing your Product Manual Activation Identifier will be sent to your email address. If you do not receive the email or encounter difficulties during activation, please contact EtaPRO LLC by email at EtaPRO-Support@etapro.com. Include your **Product Key** and the file with the **Manual Registration Identifier**.



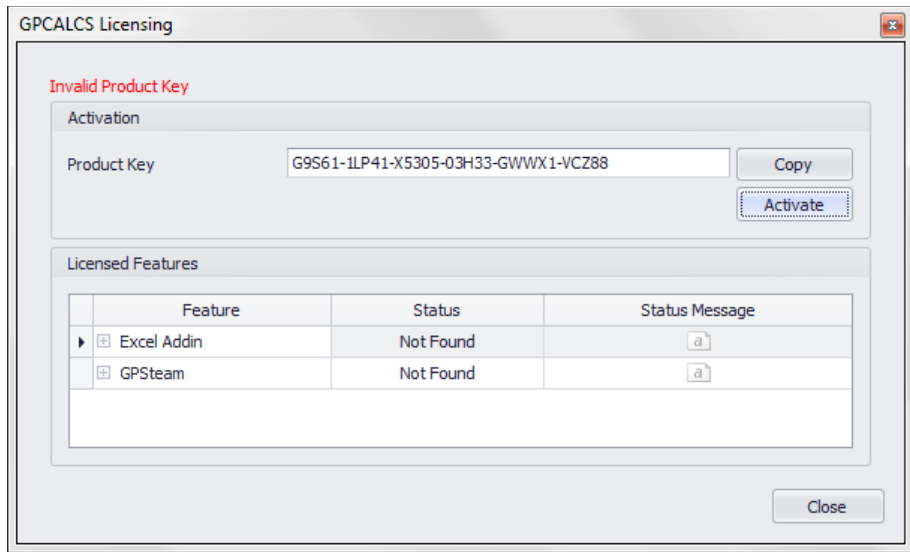
10. Open the **License Manager** and enter the Manual Activation Identifier provided in the email.



11. Click **Activate** and a message will display on the *License Manager* dialog indicating that the features are now enabled. Click **Close** to complete the licensing process.



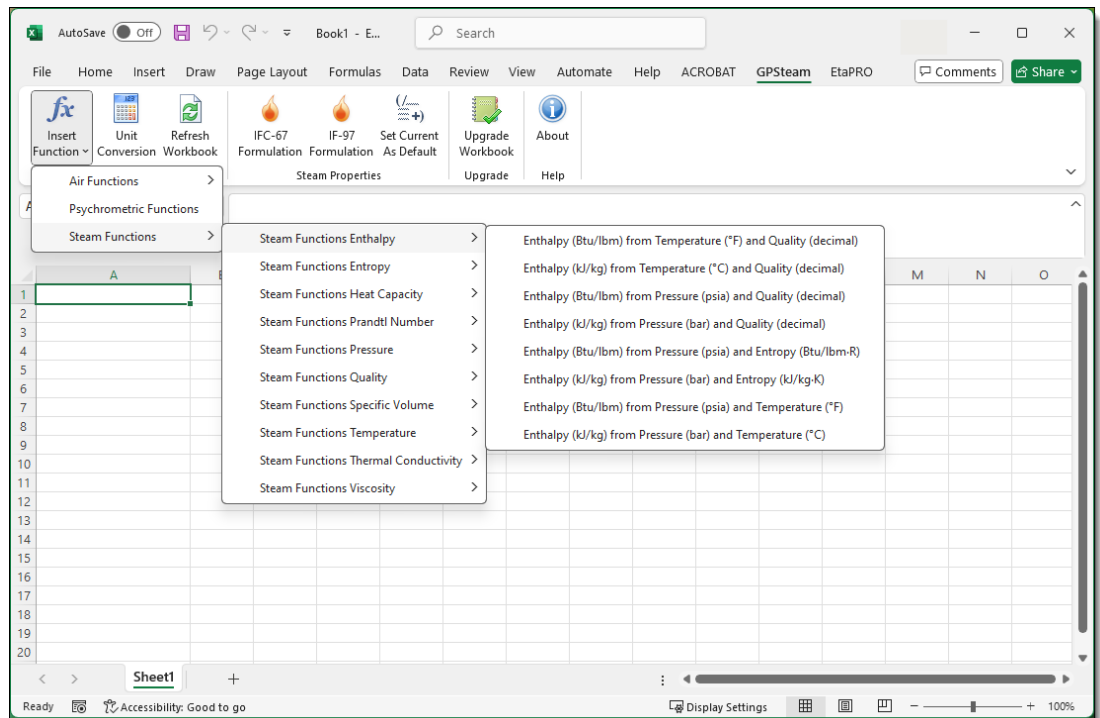
12. If you exceed your three activations and enter the **Product Key**, you will get this message on the *License Manager* dialog. Contact EtaPRO LLC by email at EtaPRO-Support@etapro.com for assistance



GPSTEAM EXCEL ADD-IN FUNCTIONS

Steam tables are provided through the GPSTEAM Excel Add-in (refer to **Figure 1**). Accurate thermodynamic properties of water and steam are **function calls** available for all your Excel spreadsheet applications. Properties are in accordance with ASME IFC-67 and IAPWS-IF97 steam table formulations. In addition, a **Unit Conversion** tool is provided.

Figure 1
GPSteam Excel
Add-In Menu



To verify that the steam tables are now available in Excel, type `"=GPXPTH(2400,1000)"` into any cell and then press the **Enter** key. An enthalpy of 1460.89 Btu/lbm returns for steam at 2400 psia and 1000°F using the IFC-67 Formulation or an enthalpy of 1461.1 Btu/lbm for the IF-97 Formulation.