

READ ME FIRST!

Congratulations on your purchase of **GPGPCALCS™ Version 7.0!**

You have acquired what we believe to be the best value in thermal performance software available today.

SYSTEM REQUIREMENTS

GPCALCS requires certain hardware and software components to be able to run properly:

- Windows® 7 or better
- Microsoft Office 2010 or better

INSTALLATION

At the time of purchase, you will be sent a link to the GPCALCS installation program, along with a Product Key used to activate the software after installation. Unzip these files to a folder on your hard drive.

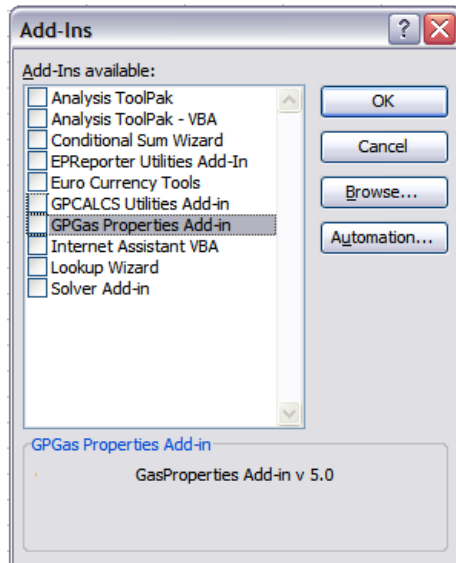
Note

If GPCALCS v7.0 installation detects that GPCALCS v6.0 or earlier is installed on your computer, you will be prompted to uninstall it.

If GPSteam v7.0 installed on your computer, you have to uninstall it prior to installing GPCALCS v7.0. You will NOT be prompted to do so.

1. If you are upgrading GPCALCS to the latest version, start Excel. Select **Developer | Add-Ins** from the Excel menu bar. If the GPCALCS Utilities and GPGas Properties Add-ins appear in the list, deselect them. There should not be a check mark next to either name, as shown in **Figure 1**. Click **OK** and then exit the program.
2. Exit any other applications that are running.
3. Browse to the folder with the GPCALCS installation files and run the **GPCALCS_Setup.exe** program.
4. Read the *License Agreement*. Check the **I agree to accept the license terms and conditions** box.
5. The default directory for the program is **C:\Program Files (x86)\GP Strategies Corporation\GPCALCS 7.0**. To select a new destination folder for the program, click the **Options** button to display the *Setup Options* dialog. Use the **Browse** button to locate the folder and then click **OK**.
6. Click **Install** to display the *User Account Control* dialog and click **Yes** to continue.
7. The files will install and when complete, the *Setup Complete* dialog displays. Click **Close**.
8. To complete the installation, you need to license the software using the **License Manager**, as described in the next section

Figure 1
Excel
Developer|Add-Ins
Menu Option



LICENSING

In previous versions of GPSteam and GPCALCS, licensing was done through a Lock Code and Key Value methodology. For GPSteam 7.0 and GPCALCS 7.0, this licensing methodology was changed to require the use of a **Product Key**. A **Product Key** is a set of 30 alpha-numeric characters similar to product keys used with other software products. Licensing enables the GPSteam Properties Calculator and the GPCALCS Excel Add-in, and registers the software to your computer.

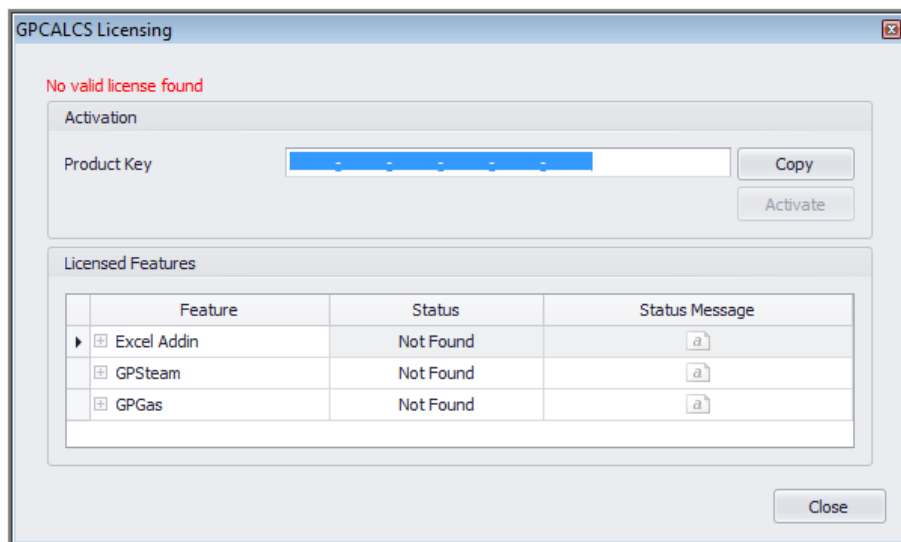
Note

Product Key. Each Product Key will allow three activations so that GPCALCS can be installed on up to three computers.

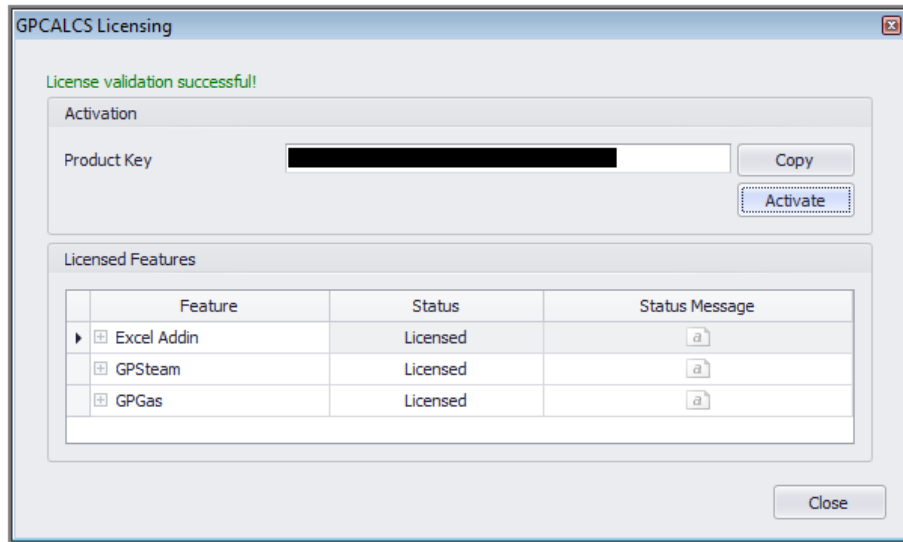
30-Day Trial Period. GP Strategies allows a 30-day trial period of the GPCALCS software for new users. After the 30-day trial period expires, GPSteam and the GPCALCS Excel Add-in will be disabled.

Follow these instructions to enter the **Product Key**:

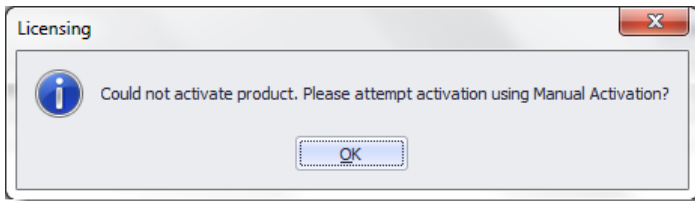
1. You should be given the **Product Key** when purchasing GPSteam or GPCALCS. If you have been using the 30-day trial version and now want the licensed version, contact GP Strategies by email at GPCALCSSupport@gpstrategies.com or by phone at 716.799.1080 or 800.803.6737 for assistance.
2. Click the License Manager icon in the **Start|All Programs Files|GPSteam 7.0** menu to display the GPCALCS Licensing dialog.



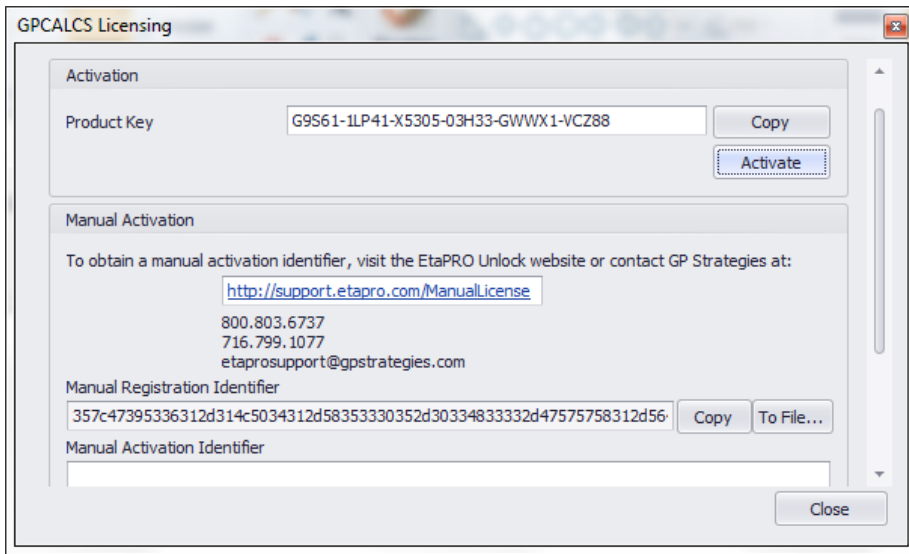
3. Enter the **Product Key** and then click **Activate**. If the activation is successful, a message will display on the **License Manager** dialog indicating that the license validation was successful and further action is not required. Click **Close** to complete the licensing process.



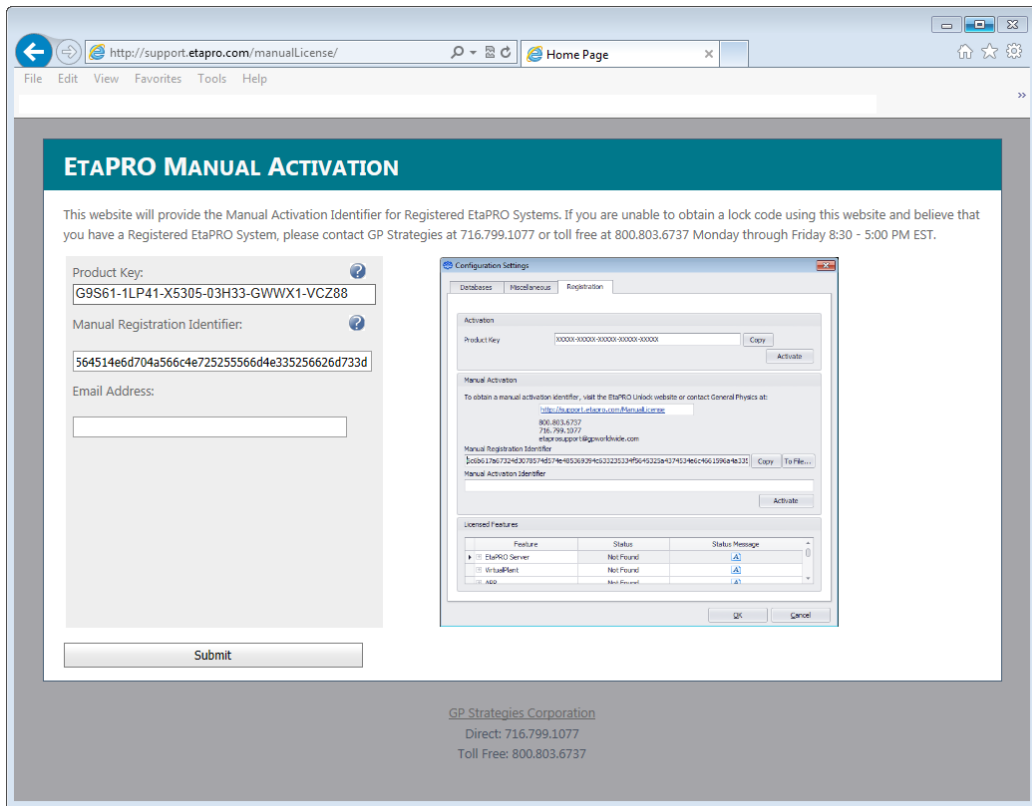
4. If you do not have internet access, you will see this *Licensing* dialog indication that activation failed.



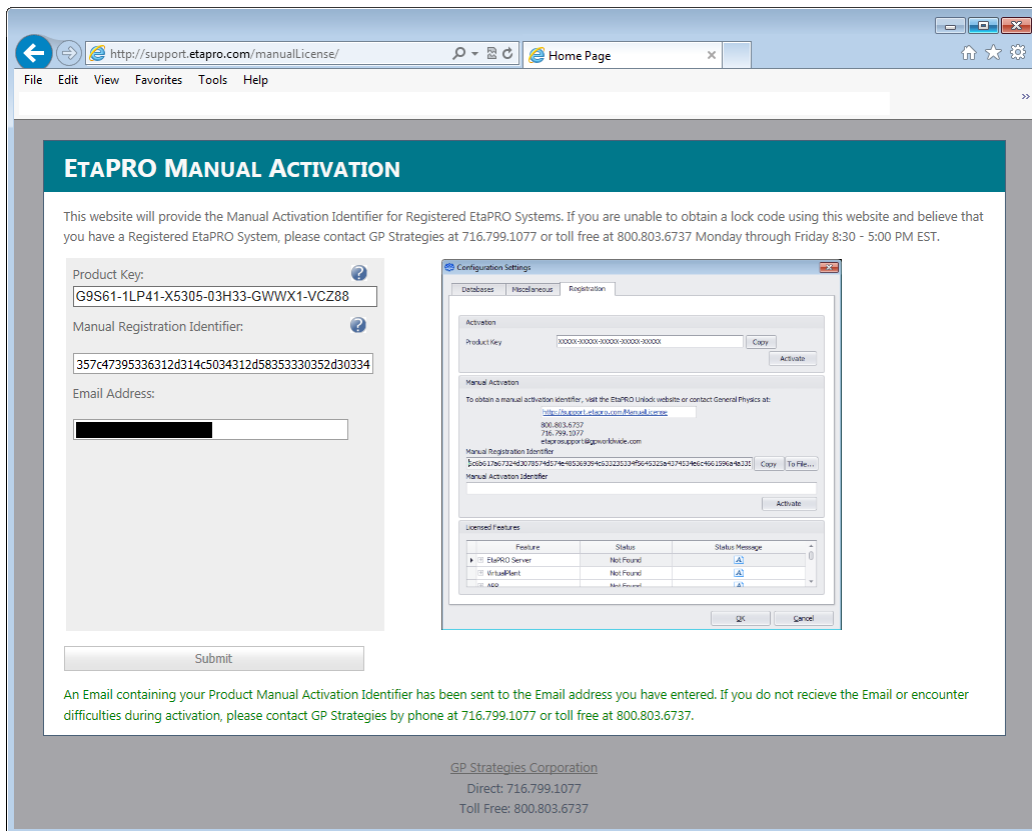
5. Click **OK** and the **Manual Activation** field will display on the *GPCALCS Licensing* dialog.



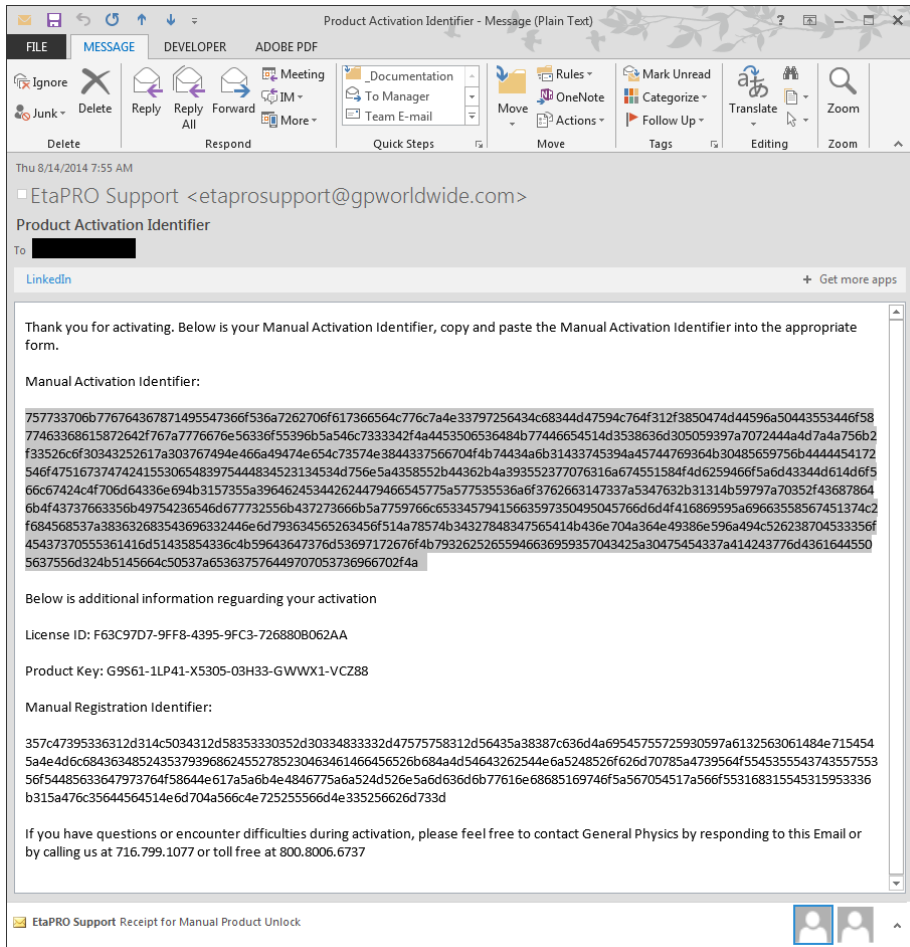
6. Click **Copy** to copy the **Manual Registration Identifier** to the clipboard or click **To File...** to save it to a file.
7. Open this website on a computer with internet access: <http://support.etapro.com/ManualLicense> to display **EtaPRO Manual Activation** website. Enter your **Product Key** and the **Manual Registration Identifier** in the fields provided along with your email address.



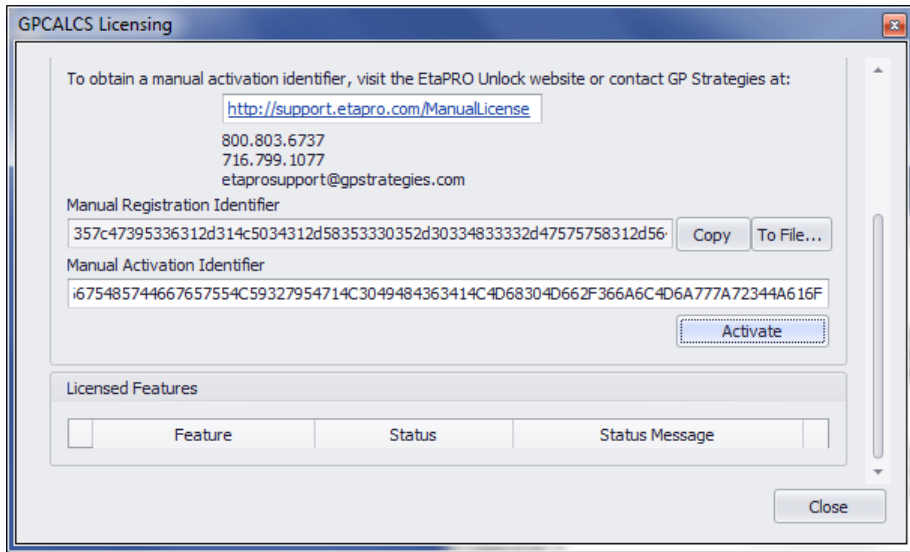
8. Click **Submit**.



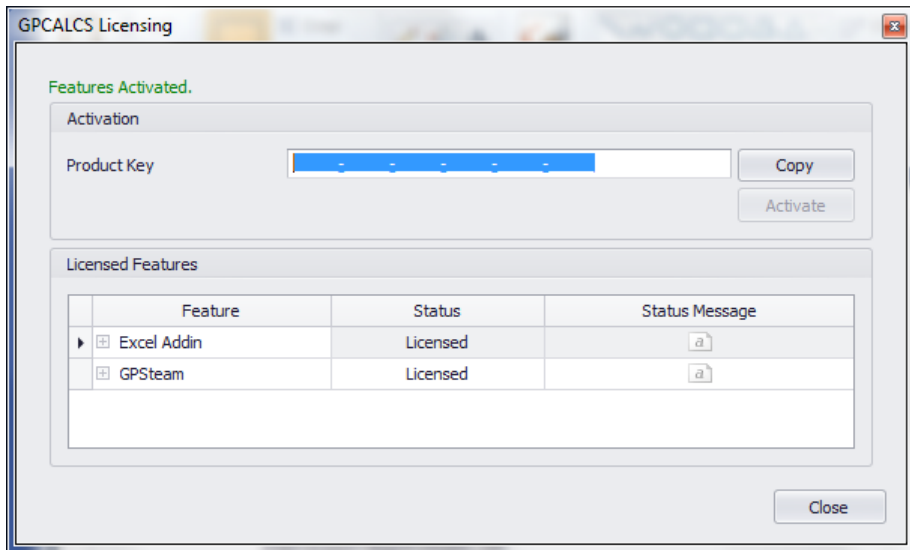
9. An email containing your **Product Manual Activation Identifier** will be sent to your email address. If you do not receive the email or encounter difficulties during activation, please contact GP Strategies by email at GPCALCSSupport@gpstrategies.com. Include your **Product Key** and the file with the **Manual Registration Identifier**.



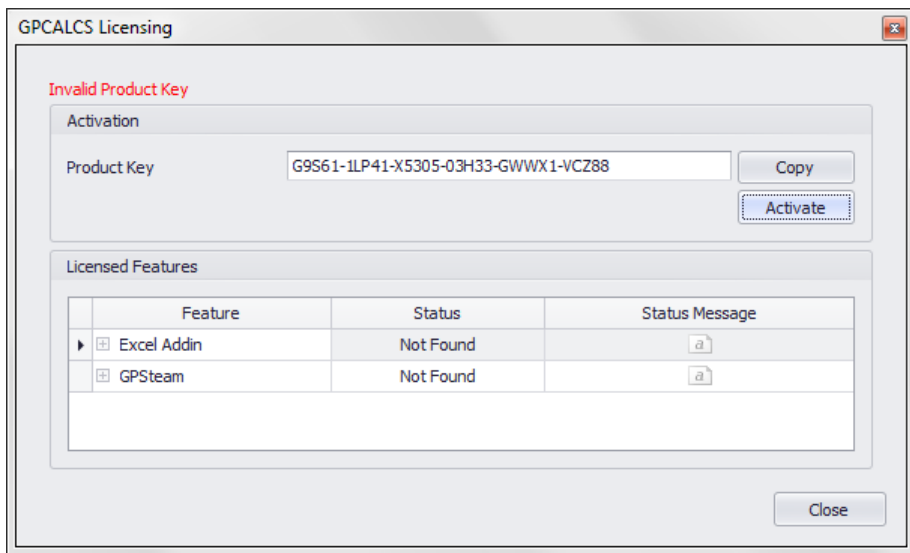
10. Open the **License Manager** and enter the **Manual Activation Identifier** provided in the email.



11. Click **Activate** and a message will display on the *License Manger* dialog indicating that the features are now enabled. Click **Close** to complete the licensing process.



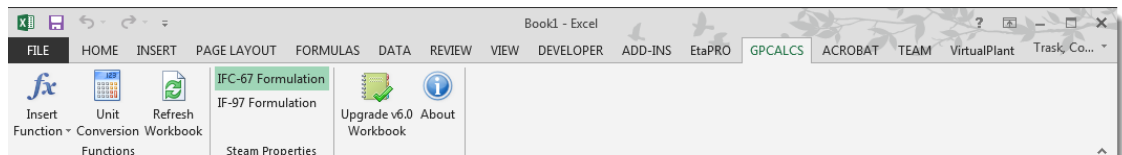
12. If you exceed your three activations and enter the **Product Key**, you will get this message on the **License Manager** dialog. Contact GP Strategies by email at GPCALCSSupport@gpstrategies.com or by phone at 716.799.1080 or 1080 or 800.803.6737 for assistance.



GPCALCS EXCEL ADD-IN FUNCTIONS

Steam tables are provided through the GPCALCS Excel Add-in (refer to **Figure 2**). Accurate thermodynamic properties of water and steam are **function calls** available for all your Excel spreadsheet applications. Properties are in accordance with ASME IFC-67 and IAPWS-IF97 steam table formulations. In addition, a **Unit Conversion** tool is provided.

Figure 2
GPCALCS Excel
Add-In Menu



To verify that the steam tables are now available in Excel, type `"=GPXPTH(2400,1000)"` into any cell and then press the **Enter** key. An enthalpy of 1460.89 Btu/lbm returns for steam at 2400 psia and 1000°F using the IFC-67 Formulation or an enthalpy of 1461.62 Btu/lbm for the IF-97 Formulation.